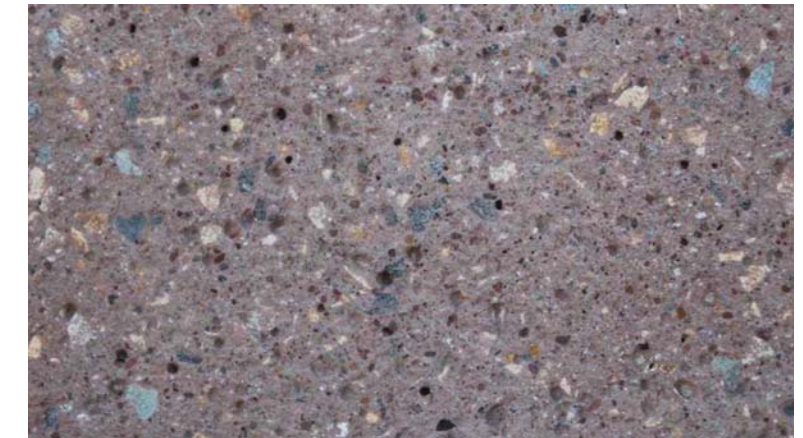


Isoleren IM

Stucco Embossed Example



LIGHT SANDBLAST



Light sandblast is the least aggressive abrasion type finish. Occasionally referred to as "brush-blast," this finish removes a minimal amount of matrix resulting in a "sandpaper" finish. The amount of aggregate exposed is minimal; due to the natural components used the color and texture will vary. Combination of different levels of sandblasting in conjunction with other casting accents yield dramatic and creative finish options.

ATAS WOODLAND SERIES
HORIZONTAL SHIPLAP
PANELING MATERIAL DEPTH



Hardie Paneling

HARDIEPLANK® LAP SIDING

SELECT CEDARMILL®

Our natural cedar look has a soft texture that mimics wood.

